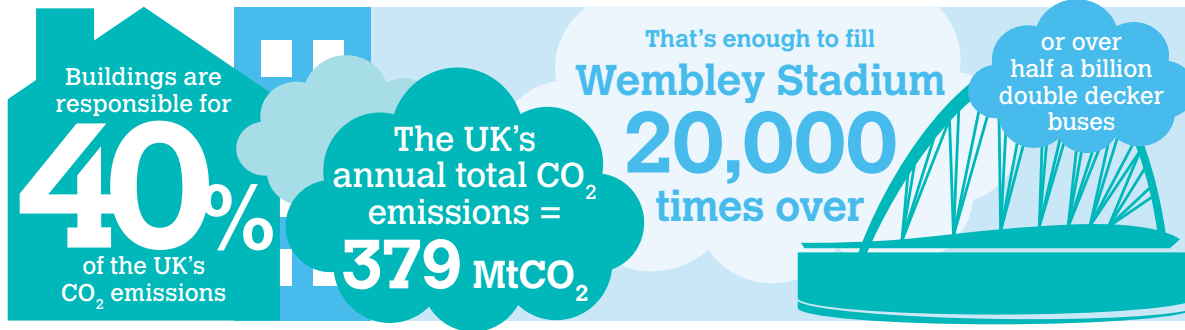


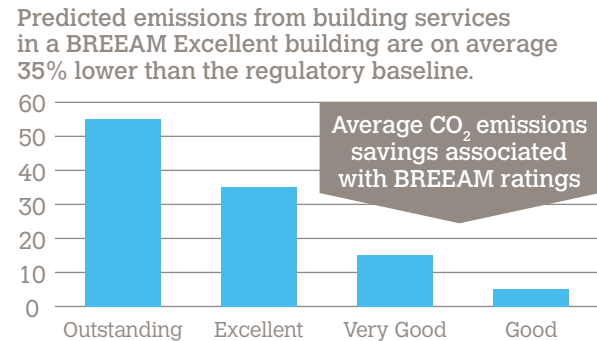
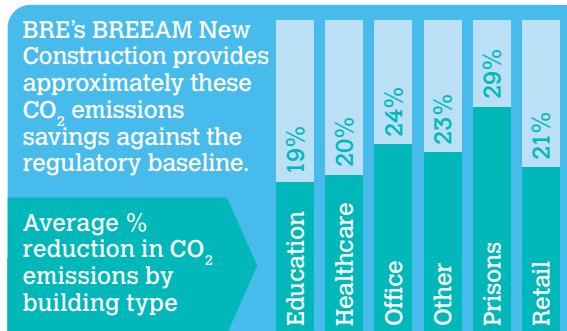
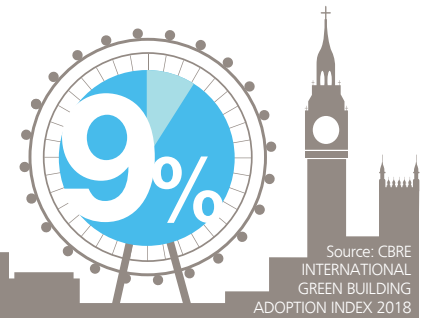


# Climate Change Act (2008)

## 10<sup>th</sup> Anniversary, 26 November 2018



BRE's BREEAM is the rating tool of choice for London. At the end of 2016, **9% (1.33m sq ft) of office space** in the Capital was BREEAM certified, outperforming all other certification standards.



The Climate Change Act (2008) received Royal Assent on 26 November 2008. It legally binds the UK to ensure its greenhouse gas emissions for the year 2050 are at least 80% lower than the 1990 baseline. BRE's BREEAM has been driving CO<sub>2</sub> emissions reduction since 1990.

Since the Climate Change Act (2008), in the UK there have been a Total (Domestic and Non-Domestic Final/PCR/PCA) of

# 21,903 BREEAM Assessments

BREEAM is the global benchmark for buildings and communities assessment methodologies.

**BRE's BREEAM standard** can be applied to any occupied building in the world. These include the new **US Embassy** in London, and the largest logistics premises in Europe, constructed for Amazon, in the Czech Republic.

existing buildings  
**large developments**  
new buildings  
refurbishment projects

BRE's Home Quality Mark was launched in 2015. It rates new homes on their overall quality and sustainability, then provides further indicators on the occupants' 'Running costs', 'Health and wellbeing' and 'Environmental footprint'.



@BRE\_Group  
www.bregroup.com

@BRE\_BREEAM  
www.breeam.com

#CCA10

HOME QUALITY MARK  
delivered by bre