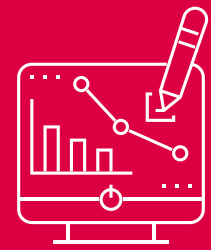




FIND OUT MORE

Call 0333 321 88 11 or
email sales@bregroup.com
www.bregroup.com
www.bre.ac



Achieve net zero

- Create a carbon reduction strategy
- Reduce emissions in line with net zero goals
- Reduce building operational costs

- **BREEAM In-Use**
- **BRE Academy - Net Zero Carbon Foundations Course**
- **Strategic Advisory**
- **NABERS UK**



Address the performance gap

- Ensure that the building performs as intended at design stage
- Achieve energy saving goals
- Demonstrate the efficiency of your asset

- **BREEAM In-Use**
- **Information Management (BIM)**
- **BRE Academy- NABERS UK & BREEAM training**
- **NABERS UK**



Align with government mandates

- Ensure asset meets standards set by government for energy performance

- **Strategic Advisory**
- **BREEAM In-Use**
- **BREEAM Refurbishment and Fit-Out**
- **NABERS UK**



**Improve client/
tenant relationships**

- Improve channels of communication with tenants through BREEAM certification
- Improve tenant health and wellbeing
- Increase building occupancy rates

- **BREEAM In-Use**
- **BREEAM Refurbishment and Fit-Out**
- **BRE Academy training**



Solutions for the Real Estate sector - Investors

FIND OUT MORE

Call 0333 321 88 11 or
email sales@bregroup.com
www.bregroup.com
www.bre.ac



Improve asset rental and occupancy values

- Attract higher rental values with BREEAM certification
- An outstanding certification results in a 12.3% premium
- An excellent certification results in a 5.4% premium

• **BREEAM New Construction**

• **BREEAM Refurbishment and Fit-Out**

• **BREEAM In-Use**

• **BRE Academy training**



Disclosure and regulation

- Be compliant with new EU taxonomy policies
- Be compliant with UK green taxonomy
- Be compliant with Sustainable Finance Disclosure Regulations

• **BREEAM New Construction**

• **BREEAM Refurbishment and Fit-Out**

• **BREEAM In-Use**

• **BRE Academy training**



Grow your portfolio and attract inward investment

- BREEAM certification demonstrates that the asset is designed to be long-lasting and high quality
- Help assets meet sustainability criteria set by banks for green finance

• **BREEAM New Construction**

• **BREEAM Refurbishment and Fit-Out**

• **BREEAM In-Use**

• **BRE Academy training**



Achieve ESG goals

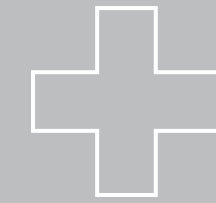
- Demonstrate commitment to ESG KPIs with BREEAM certification
- Achieve sustainability goals
- Align with GRESB

• **BREEAM New Construction**

• **BREEAM Refurbishment and Fit-Out**

• **BREEAM In-Use**

• **BRE Academy training**



Improve tenant health and wellbeing

- Implement strategies to improve wellbeing of asset tenants
- Improve occupancy rates

• **BREEAM New Construction**

• **BREEAM Refurbishment and Fit-Out**

• **BREEAM In-Use**

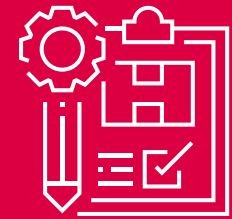
• **BRE Academy training**

• **Biophilic design advisory**



FIND OUT MORE

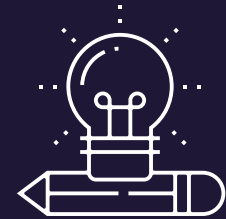
Call 0333 321 88 11 or
email sales@bregroup.com
www.bregroup.com
www.bre.ac



Planning and Preparation

- Make the best decisions for your assets
- Make sound investments
- Gain CPD certification with the BRE Academy
- Learn and knowledge share with peers
- Fast track planning permission

- **Investors**
- **Asset Managers/Owners**
- **Developers**



Design

- Deliver a resilient and sustainable asset
- Achieve an asset that has a better return on investment
- Ensure a safe and secure building with LPCB
- Reduce costs

- **Construction Architects, Engineers and Contractors**



Construction and Post-Construction

- Maximise productivity and improve supply chain
- Improve safety on site with YellowJacket
- Create a more sustainable site with SmartWaste

- **Construction Architects, Engineers and Contractors**
- **Investors**



In-Use/Occupation Management

- Certify asset
- Reduce operational costs with BREEAM In-Use
- Increase rental value
- Demonstrate commitment to ESG and sustainability goals

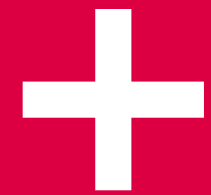
- **Investors**
- **Asset Managers/Owners**



Solutions for the Real Estate sector - Construction Architects, Engineers and Consultants

FIND OUT MORE

Call 0333 321 88 11 or
email sales@bregroup.com
www.bregroup.com
www.bre.ac



Improve safety on site

- Monitor safety on site digitally
- Reduce on site incidents
- Improve performance across the supply chain

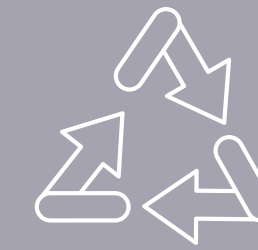
- **YellowJacket**
- **BRE Academy training**



Smooth design process

- Achieve asset design goals
- Receive support throughout the design process

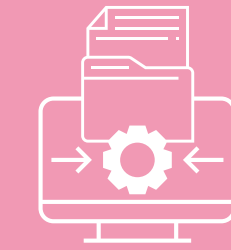
- **BREEAM Refurbishment and Fit-Out**
- **BRE Academy training**
- **BREEAM New Construction**



Achieve circularity on site

- Eliminate waste
- Reuse and recycle materials to create a closed-loop system on site
- Reduce pollution and carbon emissions

- **SmartWaste**
- **BRE Academy training**



Digitalisation

- Reduce site costs
- Gain better building performance data
- Achieve better outcomes across project lifecycle

- **BIM**
- **BRE Academy training**



Learn more about our products & services..

FIND OUT MORE

Call 0333 321 88 11 or
email sales@bregroup.com
www.bregroup.com
www.bre.ac

BREEAM

- New Construction- BREEAM new construction can be used to assess the design, construction, intended use and future-proofing of new building developments
- In-Use- BREEAM In-Use is an environmental assessment method that enables clients to determine and drive sustainable improvements in the operational performance of their buildings. It provides sustainability benchmarking and assurance for all building types.
- Refurbishment & fit-out- BREEAM Refurbishment & fit-out standard enables real estate investors, developers and building owners to assess and mitigate sustainability-related impacts during the design and works of a refurbishment or fit out project.

SABRE

SABRE is a security risk management standard for new and existing buildings, infrastructure assets and managed space

NABERS UK

NABERS UK is a simple, reliable system for rating the energy efficiency of office buildings across the UK. This helps building owners to understand their building's performance versus other similar buildings, providing a benchmark for progress.

Strategic Advisory

Our strategic advisory service provides help in addressing defining challenges in the built environment, including: net zero, decarbonisation, climate change, energy efficiency, resource efficiency, health and wellbeing, circular economy, renewable energy.

YellowJacket

YellowJacket is a health and safety site monitoring and reporting software. This helps you meet your health, safety and quality goals.

SmartWaste

SmartWaste is an environmental site monitoring and reporting software. This helps you manage and reduce resource use, waste outputs, impacts, time and costs.

BIM

Building Information Management (BIM) involves the use of information-rich 3D models and their data collaboratively, improving the quality and exchange of information throughout the design, construction, and post-construction phases.

BRE Academy

The BRE academy provides built environment training courses virtually and in-person to help you develop your career.aa